

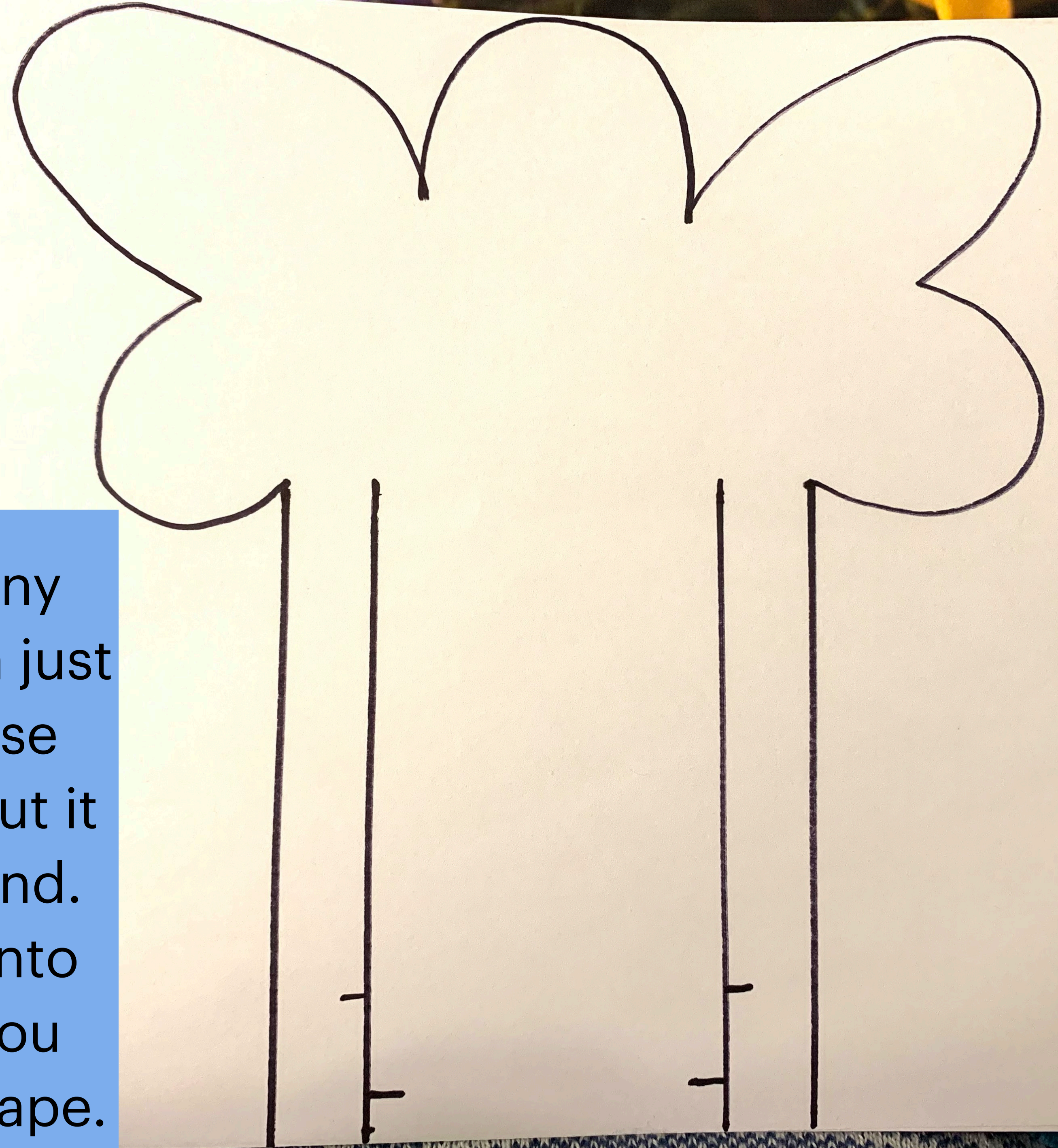
God's Throne is an Angel!

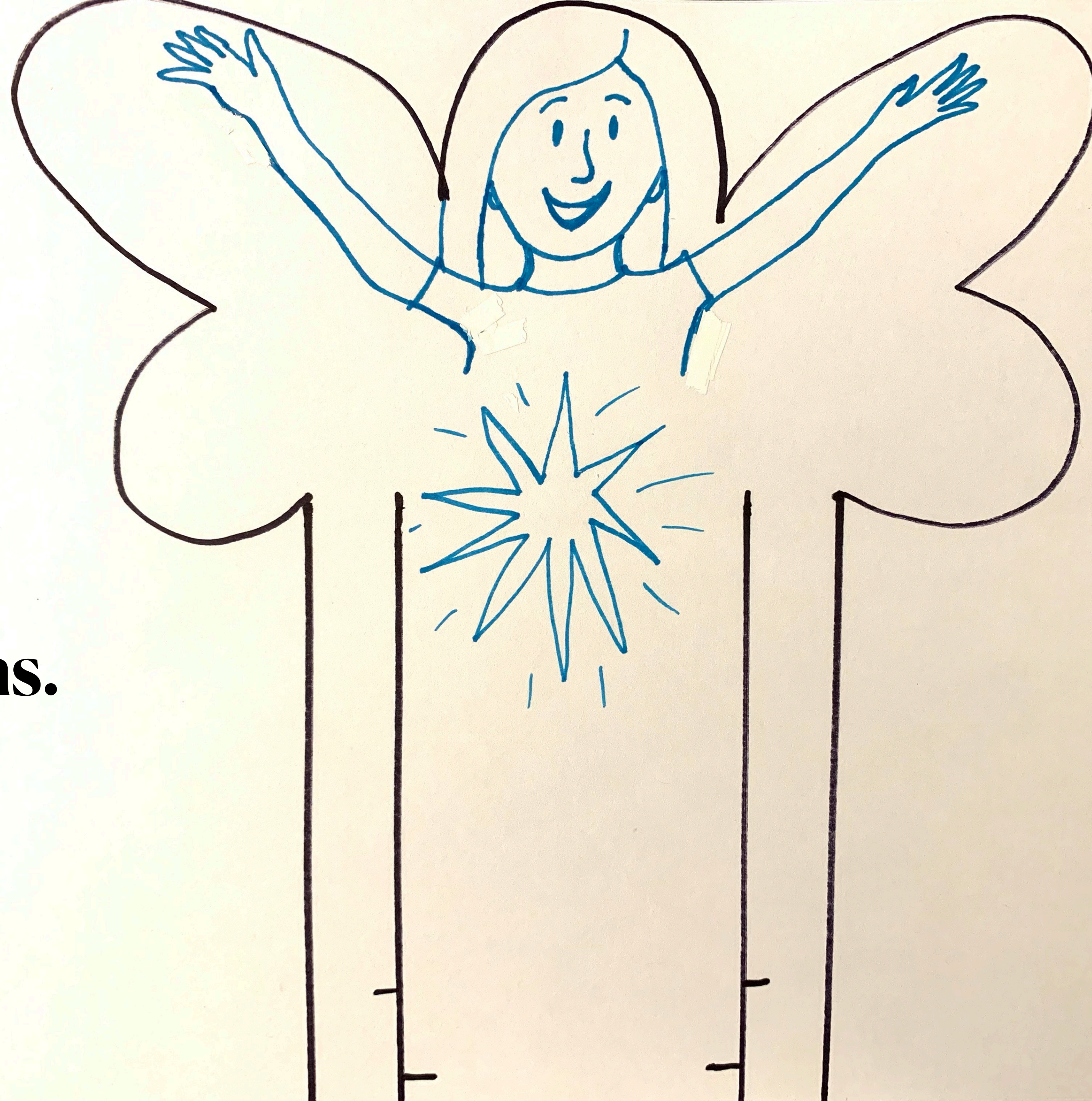
by Sandra McTiernan

February 25th, 2022



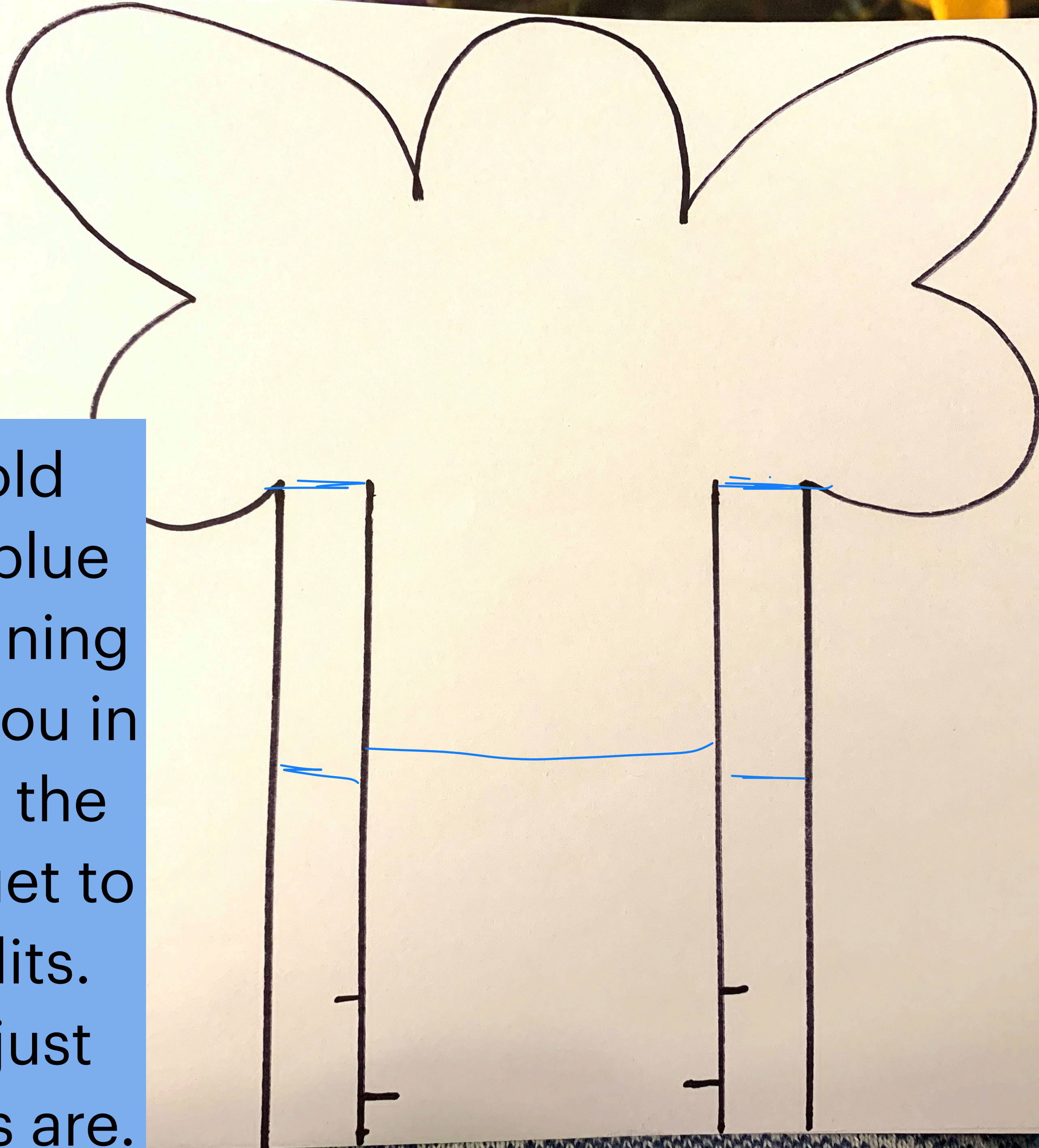
Draw this with tiny slits at the bottom just as you see. These slits will help to put it together at the end. The slits will go into each other, so you should not need tape.





**Add
decorations.**

Cut out and fold where you see blue lines. Use beginning photo to guide you in the direction of the folds. Don't forget to cut the black slits. snip each one just short as the lines are.





**Paper slits go together like this,
fully into each other, to attach arms onto seat.**



After attachment of arms of throne, the bottom ends are too long. Just fold them backward, so it will be able to stand.



Colossians 1:16

For by Him all things were created that are in heaven and that are on earth, visible and invisible, whether thrones or dominions or principalities or powers. All things were created through Him and for Him.